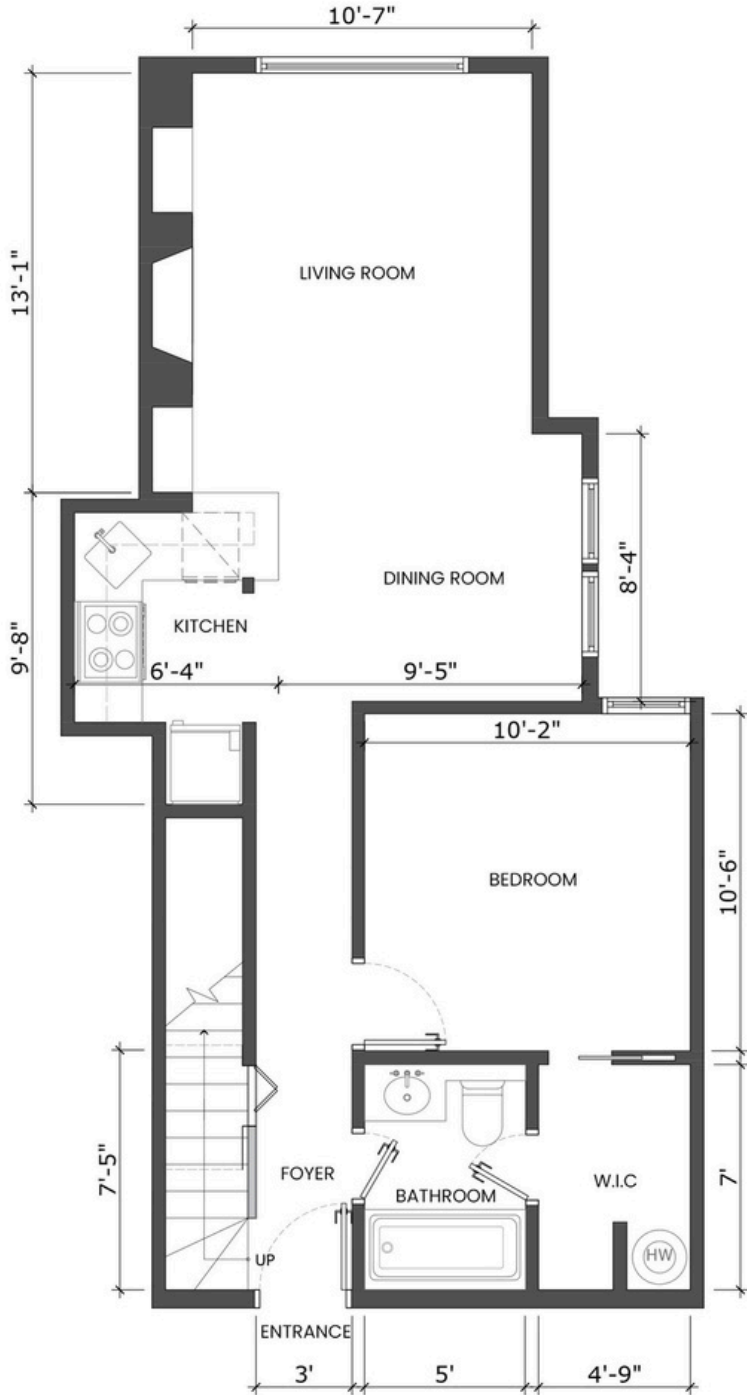
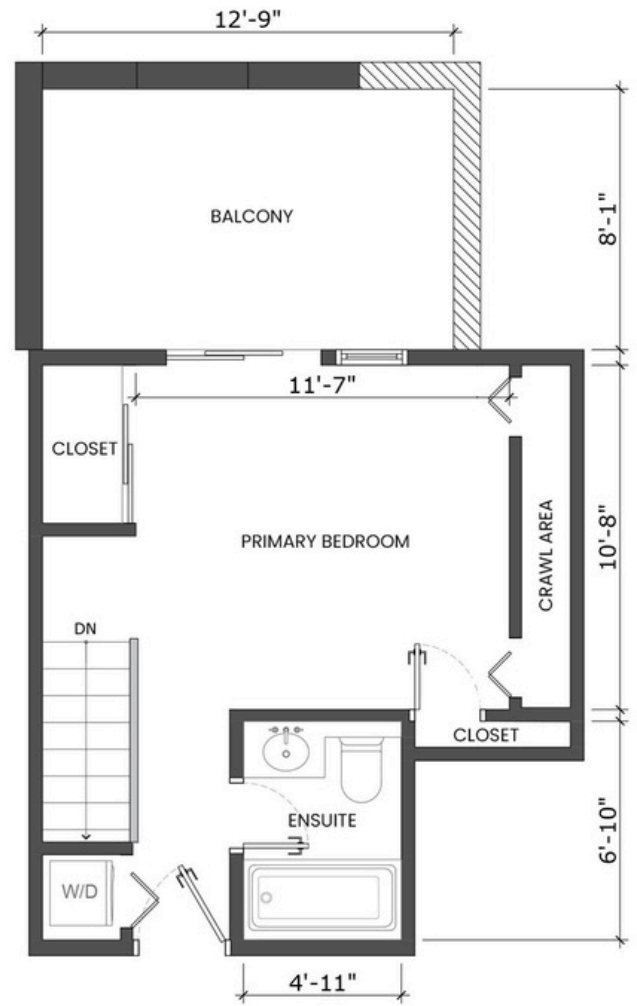


301-828 WEST 14TH AVENUE, VANCOUVER, BC

MAIN FLOOR TOTAL: 599 SQ.FT.
UPPER FLOOR TOTAL: 245 SQ.FT.
TOTAL: 844 SQ.FT.
BALCONY: 103 SQ. FT.



MAIN FLOOR PLAN
 SLOPED CEILING HEIGHT
 FROM 14'-5" TO 9'-1"



UPPER FLOOR PLAN
 SLOPED CEILING HEIGHT
 FROM 12'-6" TO 4'-0"



* PERSONAL REAL ESTATE CORPORATION. THE FLOOR PLAN ILLUSTRATION IS NOT SUITABLE FOR CONSTRUCTION/ ARCHITECTURAL PURPOSES. MEASUREMENTS ARE APPROXIMATE AND MAY NOT BE TO SCALE. E&O INSURED. FLOOR PLAN DESIGNED BY ISHOT.CA ENTERPRISES INC. 604-368-7979 ISHOT.CA