

# FIFTH Rise

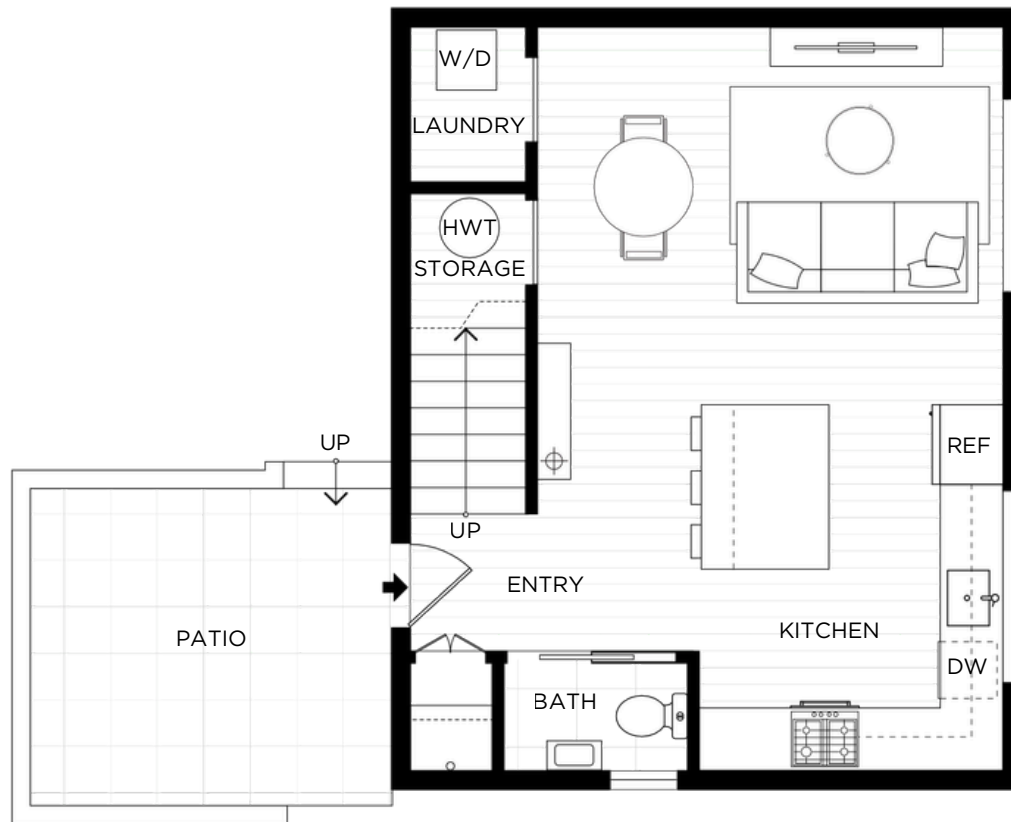
Elevated living  
for everyday life.

Three beautifully crafted homes  
with views and room to grow.

UNIT 3 - 3034 E 5<sup>TH</sup> AVE. VANCOUVER  
TOTAL: 1,012 SQ. FT.

## MAIN FLOOR

506 SQ. FT.



## SECOND FLOOR

506 SQ. FT.

